

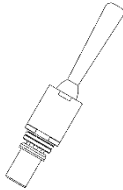
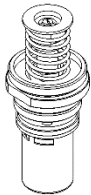
## Product Installation Guidelines

Version 1.1, 13 March 2025, Page 1 of 4

# CP-BS Lead Safe™ Timeflow Lever/Knee Operated Taps Replacement Cartridges

## PRODUCT CODES:

- 173.92.20.00 – 6 sec.      - 173.92.22.00 – 6 sec.



## SPECIFICATIONS

- Our range of AS/NZS 3718 approved tapware is reliable and durable.
- It is designed to suit the increasing need for the conservation of water and the minimisation of vandalism.
- Constructed from dezincification resistant brass Knee Operated tapware and Lever Operated tapware delivers a constant flow irrespective of pressure to provide a controlled stream.
- The cartridges are made of Lead Safe\* DR Brass.

*\*Our Lead Safe™ product range is compliant with the Lead Free Requirements of the NCC 2022 Vol. Three, Clause A5G4(2) and NSF/ANSI 372.*

**IMPORTANT:** All Time Flow Taps are tested in accordance with AS 3718 and leave our premises in good working order. Time may vary due to changes in temperature, pressure, flow rate and water quantity.

## TECHNICAL DATA

Assembly Thread		M26 x 19 TPI - Male
Outlet		N/A
Headwork		Time Flow Cartridge
Working Pressure Range (kPa)	Min	50
	Max	500
Working Temperature (°C)	Min	5
	Max	65
Nominal Flow Rate (LPM)		N/A
Construction		Brass
Finish		Chrome

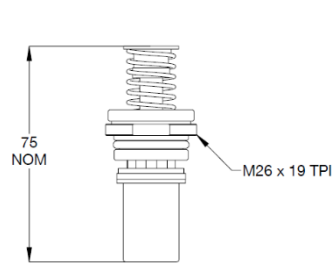
**NOTE:** Galvin Engineering continually strive to improve their products. Specifications may change without notice.

## TOOLS REQUIRED

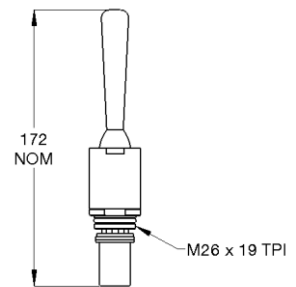
- Spanner
- Grease

## PRE-INSTALLATION

**Note:** Before installation, all lines must be flushed. We recommend that a line strainer be installed prior to Ezy-Push Time Flow cartridge taps to eliminate any foreign material.



Item code: 173.92.20.00



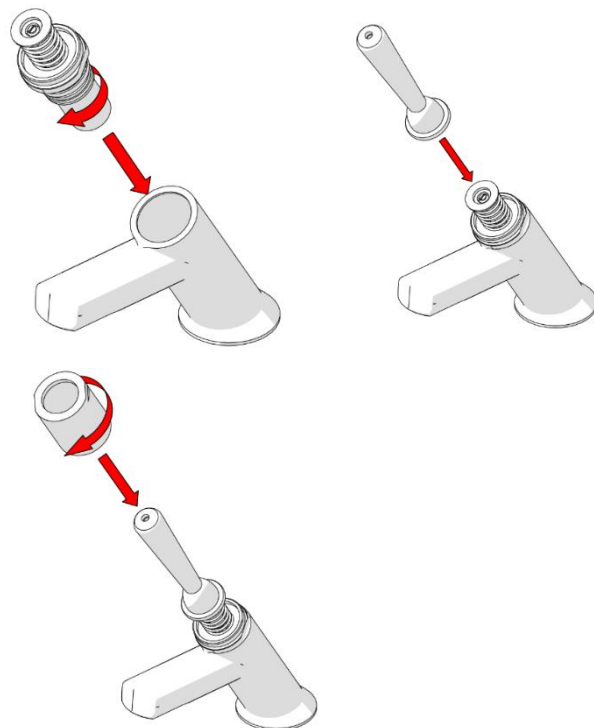
Item code: 173.92.22.00

## INSTALLATION

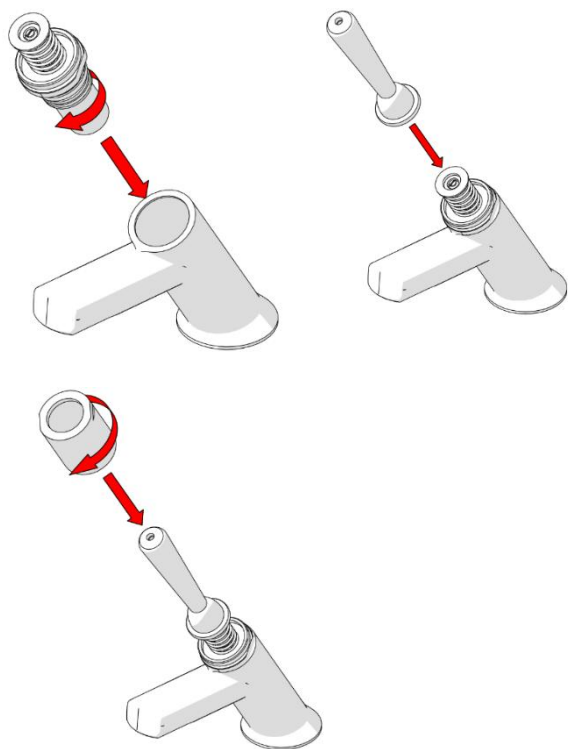
**IMPORTANT:** Galvin Specialised products must be installed in accordance with these installation instructions and in accordance with AS/NZS 3500, the PCA and your local regulatory requirements. Water and/or electrical supply conditions must also comply to the applicable national and/or state standards. Failing to comply with these provisions shall void the product warranty and may affect the performance of the product.



- 1. Turn off water supply**
  - Prior installation turn off water supply.

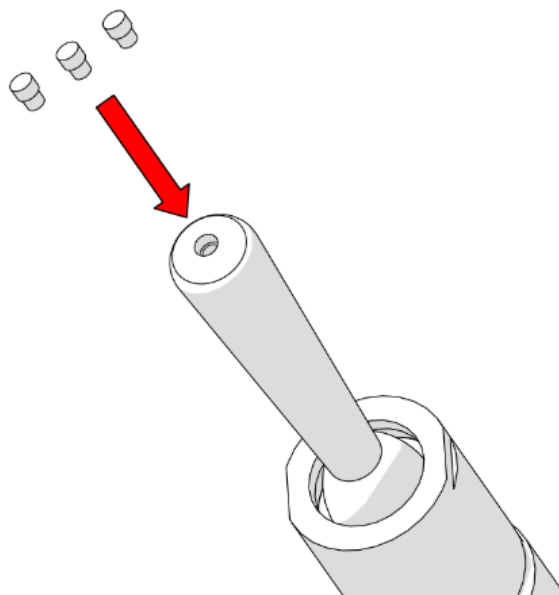


- 2. Remove Timeflow Cartridge**
  - Unscrew the sleeve and cartridge.



### 3. Replace Timeflow Cartridge

- Fit the new timeflow cartridge using a 24 mm spanner.
- Tighten the cartridge assembly down firmly, ensuring a tight seal on the o-ring. Do not over tighten (recommended 9-10Nm) as this could restrict or stop the flow. If this occurs loosen the cartridge by  $\frac{1}{4}$  of a turn.



### 4. Place indicator and inspect

- Fit color indicator hot (red), cold (blue) or warm (yellow) as required on the lever.
- When installation is complete, slowly open water supply and inspect for leaks.

## TROUBLESHOOTING

PROBLEM	CAUSE	RECTIFICATION
Taps are dripping water	Dirt/Debris in cartridge	Remove and clean cartridge
	Faulty cartridge	Replace cartridge
Water is not flowing from tap	Water is turned off	Turn on water
	Aerator or flow regulator is blocked by debris	Remove aerator and/or flow regulator from tap and remove debris. Install an inline strainer.

## WARRANTY

Galvin Engineering products are covered under our Manufacturer's Warranty. Galvin Engineering products must be installed in accordance with the installation instructions and in accordance with AS 3500 and NCC Volume Three, relevant Australian Standards and local authorities applicable to product being installed. Water and electrical supply conditions must also comply to the applicable national and/or state standards, failing to comply with these provisions may void the product warranty and affect performance of the product.

Please visit [www.galvinengineering.com.au](http://www.galvinengineering.com.au) to view the full warranty, our Installation Compliance and Maintenance & Cleaning information as well as any other additional information.